

Results for sample general2015 test paper

Your answers are marked like this:

✓ **A. You got this question right, this is your correct answer.**

✗ **A. You got this question wrong, this is your incorrect answer.**

✓ **A. You got this question wrong, this is the correct answer.**

✓ **A. You didnt answer this question but this would be the correct answer.**

Subelement G0

1: G0A07

What effect does transmitter duty cycle have when evaluating RF exposure?

✓ **A. A lower transmitter duty cycle permits greater short-term exposure levels**

✗ **B. A higher transmitter duty cycle permits greater short-term exposure levels**

C. Low duty cycle transmitters are exempt from RF exposure evaluation requirements

D. High duty cycle transmitters are exempt from RF exposure requirements

2: G0B03

Which size of fuse or circuit breaker would be appropriate to use with a circuit that uses AWG number 14 wiring?

A. 100 amperes

B. 60 amperes

C. 30 amperes

✓ **D. 15 amperes**

Subelement G1

3: G1A06

Which of the following frequencies is within the General Class portion of the 75-meter phone band?

A. 1875 kHz

✗ **B. 3750 kHz**

✓ **C. 3900 kHz**

D. 4005 kHz

4: G1B09

When may an amateur station transmit communications in which the licensee or control operator has a pecuniary (monetary) interest?

✓ **A. When other amateurs are being notified of the sale of apparatus normally used in an amateur station and such activity is not done on a regular basis**

B. Only when there is no other means of communications readily available

C. When other amateurs are being notified of the sale of any item with a monetary value less than \$200 and such activity is not done on a regular basis

✗ **D. Never**

5: G1C01

What is the maximum transmitting power an amateur station may use on 10.140 MHz?

✓ **A. 200 watts PEP output**

B. 1000 watts PEP output

✗ **C. 1500 watts PEP output**

D. 2000 watts PEP output

6: G1D11

If a person has an expired FCC issued amateur radio license of General Class or higher, what is required before they can receive a new license?

A. They must have a letter from the FCC showing they once held an amateur or commercial license

✗ **B. There are no requirements other than being able to show a copy of the expired license**

C. The applicant must be able to produce a copy of a page from a call book published in the USA showing his or her name and address

✓ **D. The applicant must pass the current element 2 exam**

7: G1E05

What types of messages for a third party in another country may be transmitted by an amateur station?

A. Any message, as long as the amateur operator is not paid

B. Only messages for other licensed amateurs

✓ **C. Only messages relating to Amateur Radio or remarks of a personal character, or messages relating to emergencies or disaster relief**

D. Any messages, as long as the text of the message is recorded in the station log

Subelement G2

8: G2A02

Which of the following modes is most commonly used for voice communications on the 160-meter, 75-meter, and 40-meter bands?

A. Upper sideband

✓ **B. Lower sideband**

C. Vestigial sideband

D. Double sideband

9: G2B08

What is the "DX window" in a voluntary band plan?

✓ **A. A portion of the band that should not be used for contacts between stations within the 48 contiguous United States**

B. An FCC rule that prohibits contacts between stations within the United States and possessions in that portion of the band

C. An FCC rule that allows only digital contacts in that portion of the band

✗ **D. A portion of the band that has been voluntarily set aside for digital contacts only**

10: G2C11

What does the Q signal "QRV" mean?

A. You are sending too fast

B. There is interference on the frequency

C. I am quitting for the day

✓ **D. I am ready to receive messages**

11: G2D06

How is a directional antenna pointed when making a "long-path" contact with

another station?

- A. Toward the rising Sun
- B. Along the gray line
- ☒ C. 180 degrees from its short-path heading
- D. Toward the north

12: G2E07

What segment of the 80-meter band is most commonly used for digital transmissions?

- ☒ A. 3570 – 3600 kHz
- B. 3500 – 3525 kHz
- C. 3700 – 3750 kHz
- D. 3775 – 3825 kHz

Subelement G3

13: G3A13

What does the A-index indicate?

- A. The relative position of sunspots on the surface of the Sun
- B. The amount of polarization of the Sun's electric field
- ☒ C. The long term stability of the Earth's geomagnetic field
- D. The solar radio flux at Boulder, Colorado

14: G3B02

Which of the following is a good indicator of the possibility of sky-wave propagation on the 6-meter band?

- ☒ A. Short skip sky-wave propagation on the 10-meter band
- ☒ B. Long skip sky-wave propagation on the 10-meter band
- C. Severe attenuation of signals on the 10-meter band
- D. Long delayed echoes on the 10-meter band

15: G3C04

What does the term "critical angle" mean as used in radio wave propagation?

- A. The long path azimuth of a distant station
- B. The short path azimuth of a distant station
- C. The lowest takeoff angle that will return a radio wave to the Earth under specific ionospheric conditions
- ☒ D. The highest takeoff angle that will return a radio wave to the Earth under specific ionospheric conditions

Subelement G4

16: G4A12

Which of the following is a common use for the dual VFO feature on a transceiver?

- A. To allow transmitting on two frequencies at once
- B. To permit full duplex operation, that is transmitting and receiving at the same time
- ☒ C. To permit monitoring of two different frequencies
- D. To facilitate computer interface

17: G4B11

Which of the following must be connected to an antenna analyzer when it is being used for SWR measurements?

- A. Receiver

B. Transmitter

✓ **C. Antenna and feed line**

D. All of these choices are correct

18: G4C03

What sound is heard from an audio device or telephone if there is interference from a nearby single sideband phone transmitter?

A. A steady hum whenever the transmitter is on the air

B. On-and-off humming or clicking

✓ **C. Distorted speech**

D. Clearly audible speech

19: G4D04

What does an S meter measure?

A. Conductance

B. Impedance

✓ **C. Received signal strength**

D. Transmitter power output

20: G4E05

Which of the following most limits the effectiveness of an HF mobile transceiver operating in the 75-meter band?

A. "Picket Fencing" signal variation

B. The wire gauge of the DC power line to the transceiver

✓ **C. The antenna system**

D. FCC rules limiting mobile output power on the 75-meter band

Subelement G5

21: G5A01

What is impedance?

A. The electric charge stored by a capacitor

B. The inverse of resistance

✓ **C. The opposition to the flow of current in an AC circuit**

D. The force of repulsion between two similar electric fields

22: G5B13

What is the output PEP of an unmodulated carrier if an average reading wattmeter connected to the transmitter output indicates 1060 watts?

A. 530 watts

✓ **B. 1060 watts**

C. 1500 watts

D. 2120 watts

23: G5C13

Which of the following components should be added to a capacitor to increase the capacitance?

A. An inductor in series

B. A resistor in series

✓ **C. A capacitor in parallel**

D. A capacitor in series

Subelement G6

24: G6A07

What are the stable operating points for a bipolar transistor used as a switch in a logic circuit?

✓ **A. Its saturation and cutoff regions**

B. Its active region (between the cutoff and saturation regions)

✗ **C. Its peak and valley current points**

D. Its enhancement and depletion modes

25: G6B09

Which of the following is a characteristic of a liquid crystal display?

✓ **A. It requires ambient or back lighting**

B. It offers a wide dynamic range

C. It has a wide viewing angle

D. All of these choices are correct

Subelement G7

26: G7A11

Which symbol in figure G7-1 represents an NPN junction transistor?

A. Symbol 1

✓ **B. Symbol 2**

C. Symbol 7

D. Symbol 11

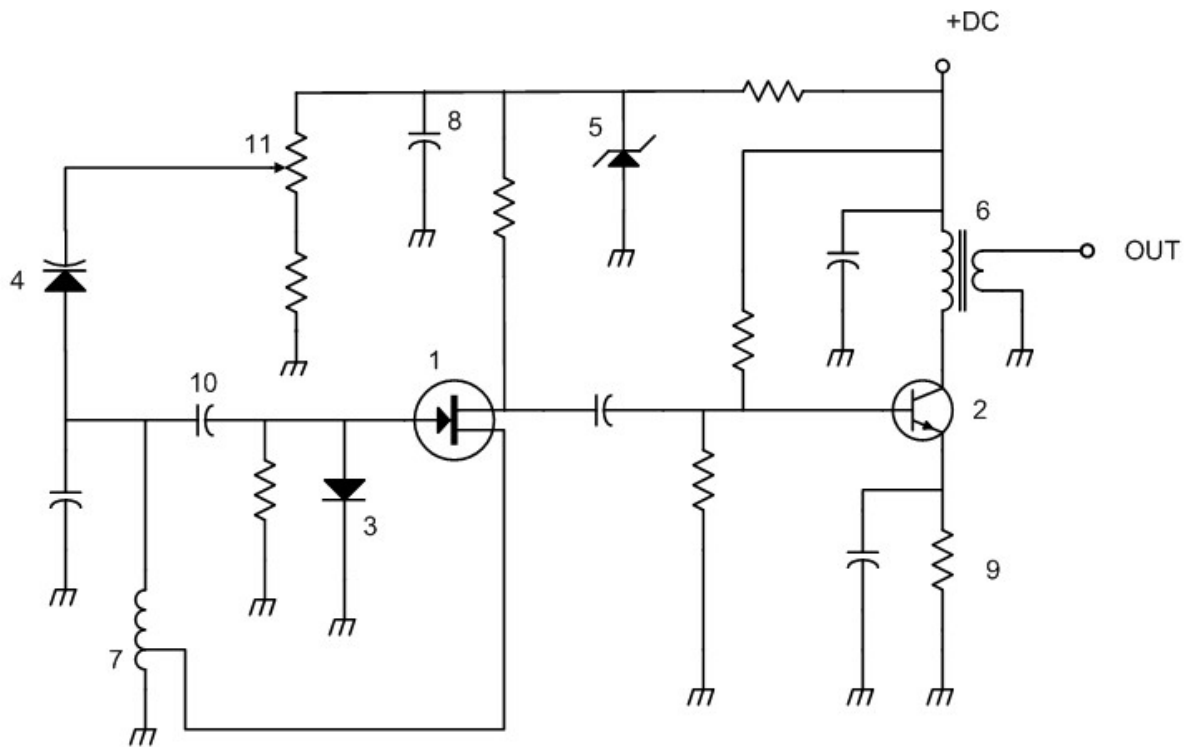


Figure G7-1

27: G7B04

Which of the following describes the function of a two input NOR gate?

- A. Output is high when either or both inputs are low
- B. Output is high only when both inputs are high
- ✓ C. Output is low when either or both inputs are high
- D. Output is low only when both inputs are high

28: G7C07

What is the simplest combination of stages that implement a superheterodyne receiver?

- A. RF amplifier, detector, audio amplifier
- B. RF amplifier, mixer, IF discriminator
- ✓ C. HF oscillator, mixer, detector
- D. HF oscillator, prescaler, audio amplifier

Subelement G8

29: G8A08

Which of the following is an effect of overmodulation?

- A. Insufficient audio
- B. Insufficient bandwidth
- C. Frequency drift
- ✓ D. Excessive bandwidth

30: G8B01

What receiver stage combines a 14.250 MHz input signal with a 13.795 MHz oscillator

signal to produce a 455 kHz intermediate frequency (IF) signal?

☒ **A. Mixer**

B. BFO

C. VFO

D. Discriminator

31: G8C01

Which of the following digital modes is designed to operate at extremely low signal strength on the HF bands?

A. FSK441 and Hellschreiber

☒ **B. JT9 and JT65**

C. Clover

D. RTTY

Subelement G9

32: G9A09

What standing wave ratio will result when connecting a 50 ohm feed line to a non-reactive load having 200 ohm impedance?

☒ **A. 4:1**

B. 1:4

C. 2:1

D. 1:2

33: G9B04

What is the radiation pattern of a dipole antenna in free space in the plane of the conductor?

☒ **A. It is a figure-eight at right angles to the antenna**

B. It is a figure-eight off both ends of the antenna

C. It is a circle (equal radiation in all directions)

D. It has a pair of lobes on one side of the antenna and a single lobe on the other side

34: G9C13

Approximately how long is each side of the driven element of a quad antenna?

☒ **A. 1/4 wavelength**

B. 1/2 wavelength

C. 3/4 wavelength

☒ **D. 1 wavelength**

35: G9D11

Which of the following is a disadvantage of multiband antennas?

☒ **A. They present low impedance on all design frequencies**

B. They must be used with an antenna tuner

C. They must be fed with open wire line

☒ **D. They have poor harmonic rejection**

Results:

You scored 25 correct answers and 10 incorrect answers from a total of 35.

Unfortunately, you had 10 wrong answers and you are only allowed 9.

Click here to [take another test](#).

Please mail any comments to me, [Simon AA9PW](#), I appreciate your feedback. If you Like the site, please Like us on Facebook!



aa9pw
1,884 likes

