

Results for sample technician2014 test paper

Your answers are marked like this:

✓ **A. You got this question right, this is your correct answer.**

✗ *A. You got this question wrong, this is your incorrect answer.*

✓ *A. You got this question wrong, this is the correct answer.*

✓ **A. You didnt answer this question but this would be the correct answer.**

Subelement T0

1: T0A07

Which of these precautions should be taken when installing devices for lightning protection in a coaxial cable feed line?

- A. Include a parallel bypass switch for each protector so that it can be switched out of the circuit when running high power
- B. Include a series switch in the ground line of each protector to prevent RF overload from inadvertently damaging the protector
- C. Keep the ground wires from each protector separate and connected to station ground

✓ **D. Ground all of the protectors to a common plate which is in turn connected to an external ground**

2: T0B03

Under what circumstances is it safe to climb a tower without a helper or observer?

- A. When no electrical work is being performed
- B. When no mechanical work is being performed
- C. When the work being done is not more than 20 feet above the ground

✓ **D. Never**

3: T0C06

Which of the following is an acceptable method to determine that your station complies with FCC RF exposure regulations?

- A. By calculation based on FCC OET Bulletin 65
- B. By calculation based on computer modeling
- C. By measurement of field strength using calibrated equipment

✓ **D. All of these choices are correct**

Subelement T1

4: T1A05

Which of the following is a purpose of the Amateur Radio Service rules and regulations as defined by the FCC?

☒ **A. Enhancing international goodwill**

☐ **B. Providing inexpensive communication for local emergency organizations**

C. Training of operators in military radio operating procedures

D. All of these choices are correct

5: T1B10

Which of the bands above 30 MHz that are available to Technician Class operators have mode-restricted sub-bands?

A. The 6 meter, 2 meter, and 70 cm bands

B. The 2 meter and 13 cm bands

☒ **C. The 6 meter, 2 meter, and 1.25 meter bands**

D. The 2 meter and 70 cm bands

6: T1C02

Which of the following is a valid US amateur radio station call sign?

A. KMA3505

☒ **B. W3ABC**

C. KDKA

D. 11Q1176

7: T1D08

In which of the following circumstances may the control operator of an amateur station receive compensation for operating the station?

A. When engaging in communications on behalf of their employer

☒ **B. When the communication is incidental to classroom instruction at an educational institution**

C. When re-broadcasting weather alerts during a RACES net

D. When notifying other amateur operators of the availability for sale or trade of apparatus

8: T1E04

What determines the transmitting privileges of an amateur station?

A. The frequency authorized by the frequency coordinator

B. The class of operator license held by the station licensee

C. The highest class of operator license held by anyone on the premises

☒ **D. The class of operator license held by the control operator**

9: T1F02

When using tactical identifiers such as Race Headquarters during a community service net operation, how often must your station transmit the station's FCC-assigned call sign?

- A. Never, the tactical call is sufficient
- B. Once during every hour

☒ **C. At the end of each communication and every ten minutes during a communication**

- D. At the end of every transmission

Subelement T2

10: T2A04

What is an appropriate way to call another station on a repeater if you know the other station's call sign?

- A. Say break, break then say the station's call sign

☒ **B. Say the station's call sign then identify with your call sign**

- C. Say CQ three times then the other station's call sign
- D. Wait for the station to call CQ then answer it

11: T2B11

Which Q signal indicates that you are changing frequency?

- A. QRU

☒ **B. QSY**

- C. QSL
- D. QRZ

12: T2C07

Which of the following is an accepted practice for an amateur operator who has checked into an emergency traffic net?

- A. Provided that the frequency is quiet, announce the station call sign and location every 5 minutes
- B. Move 5 kHz away from the net's frequency and use high power to ask other hams to keep clear of the net frequency

☒ **C. Remain on frequency without transmitting until asked to do so by the net control station**

- D. All of the choices are correct

Subelement T3

13: T3A07

What type of wave carries radio signals between transmitting and receiving stations?

☒ **A. Electromagnetic**

- B. Electrostatic
- C. Surface acoustic
- D. Magnetostrictive

14: **You forgot to answer this one!** T3B10

What frequency range is referred to as HF?

- A. 300 to 3000 MHz
- B. 30 to 300 MHz
- ✓ **C. 3 to 30 MHz**
- D. 300 to 3000 kHz

15: T3C03

What is a characteristic of VHF signals received via auroral reflection?

- A. Signals from distances of 10,000 or more miles are common
- ✓ **B. The signals exhibit rapid fluctuations of strength and often sound distorted**
- C. These types of signals occur only during winter nighttime hours
- D. These types of signals are generally strongest when your antenna is aimed west

Subelement T4

16: T4A02

How might a computer be used as part of an amateur radio station?

- A. For logging contacts and contact information
- B. For sending and/or receiving CW
- C. For generating and decoding digital signals
- ✓ **D. All of these choices are correct**

17: T4B01

What may happen if a transmitter is operated with the microphone gain set too high?

- A. The output power might be too high
- ✓ **B. The output signal might become distorted**
- C. The frequency might vary
- D. The SWR might increase

Subelement T5

18: T5A03

What is the name for the flow of electrons in an electric circuit?

- A. Voltage
- B. Resistance
- C. Capacitance
- ✓ **D. Current**

19: T5B05

Which of the following is equivalent to 500 milliwatts?

- A. 0.02 watts
- ✓ **B. 0.5 watts**
- C. 5 watts
- D. 50 watts

20: T5C09

How much power is being used in a circuit when the applied voltage is 13.8 volts DC and the current is 10 amperes?

- ☒ **A. 138 watts**
- ☐ B. 0.7 watts
- ☐ C. 23.8 watts
- ☐ D. 3.8 watts

21: T5D08

What is the current flowing through a 100-ohm resistor connected across 200 volts?

- ☐ A. 20,000 amperes
- ☐ B. 0.5 amperes
- ☒ **C. 2 amperes**
- ☐ D. 100 amperes

Subelement T6

22: T6A03

What electrical parameter is controlled by a potentiometer?

- ☐ A. Inductance
- ☒ **B. Resistance**
- ☐ C. Capacitance
- ☐ D. Field strength

23: T6B08

What does the abbreviation FET stand for?

- ☒ **A. Field Effect Transistor**
- ☐ B. Fast Electron Transistor
- ☐ C. Free Electron Transition
- ☐ D. Field Emission Thickness

24: T6C06

What is component 6 in figure T2?

- ☐ A. Resistor
- ☒ **B. Capacitor**
- ☐ C. Regulator IC
- ☐ D. Transistor

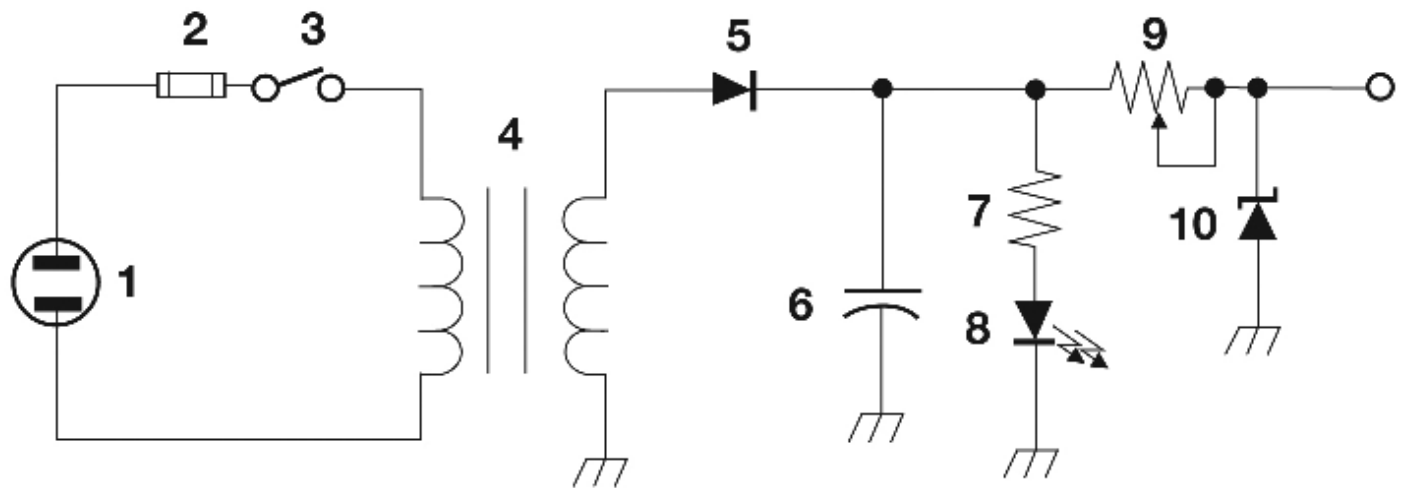


Figure T-2

25: T6D11

What is a simple resonant or tuned circuit?

- ☒ **A. An inductor and a capacitor connected in series or parallel to form a filter**
- B. A type of voltage regulator
- C. A resistor circuit used for reducing standing wave ratio
- D. A circuit designed to provide high fidelity audio

Subelement T7

26: T7A01

Which term describes the ability of a receiver to detect the presence of a signal?

- A. Linearity
- ☒ **B. Sensitivity**
- C. Selectivity
- D. Total Harmonic Distortion

27: T7B07

Which of the following may be useful in correcting a radio frequency interference problem?

- A. Snap-on ferrite chokes
- B. Low-pass and high-pass filters
- C. Band-reject and band-pass filters
- ☒ **D. All of these choices are correct**

28: T7C09

Which of the following is the most common cause for failure of coaxial cables?

- ☒ **A. Moisture contamination**
- B. Gamma rays
- C. The velocity factor exceeds 1.0

D. Overloading

29: T7D10

What is probably happening when an ohmmeter, connected across an unpowered circuit, initially indicates a low resistance and then shows increasing resistance with time?

A. The ohmmeter is defective

☒ **B. The circuit contains a large capacitor**

C. The circuit contains a large inductor

D. The circuit is a relaxation oscillator

Subelement T8

30: T8A03

Which type of voice mode is most often used for long-distance (weak signal) contacts on the VHF and UHF bands?

A. FM

B. DRM

☒ **C. SSB**

D. PM

31: T8B06

Which of the following are inputs to a satellite tracking program?

A. The weight of the satellite

☒ **B. The Keplerian elements**

C. The last observed time of zero Doppler shift

D. All of these answers are correct

32: T8C08

What is required in place of on-air station identification when sending signals to a radio control model using amateur frequencies?

A. Voice identification must be transmitted every 10 minutes

B. Morse code ID must be sent once per hour

☒ **C. A label indicating the licensee's name, call sign and address must be affixed to the transmitter**

D. A flag must be affixed to the transmitter antenna with the station call sign in 1 inch high letters or larger

33: T8D05

Which of the following is an application of APRS (Automatic Packet Reporting System)?

☒ **A. Providing real time tactical digital communications in conjunction with a map showing the locations of stations**

B. Showing automatically the number of packets transmitted via PACTOR during a specific time interval

C. Providing voice over Internet connection between repeaters

D. Providing information on the number of stations signed into a repeater

Subelement T9

34: T9A12

What is a reason to use a properly mounted 5/8 wavelength antenna for VHF or UHF mobile service?

✓ A. It offers a lower angle of radiation and more gain than a 1/4 wavelength antenna and usually provides improved coverage

B. It features a very high angle of radiation and is better for communicating via a repeater

C. The 5/8 wavelength antenna completely eliminates distortion caused by reflected signals

x D. The 5/8 wavelength antenna offers a 10-times power gain over a 1/4 wavelength design

35: T9B11

Which of the following types of feed line has the lowest loss at VHF and UHF?

A. 50-ohm flexible coax

B. Multi-conductor unbalanced cable

✓ C. Air-insulated hard line

D. 75-ohm flexible coax

Results:

You scored 32 correct answers and 3 incorrect answers from a total of 35.

You also forgot to answer 1 questions in the exam.

You would have passed the exam! Congratulations!

e)

Click here to [take another test](#).

Please mail any comments to me, [Simon AA9PW](#), I appreciate your feedback. If you Like the site, please Like us on Facebook!



aa9pw
1,886 likes

Like Page

Share

Be the first of your friends to like this

