

Results for sample general2015 test paper

Your answers are marked like this:

✓ **A. You got this question right, this is your correct answer.**

✗ *A. You got this question wrong, this is your incorrect answer.*

✓ *A. You got this question wrong, this is the correct answer.*

✓ **A. You didnt answer this question but this would be the correct answer.**

Subelement G0

1: G0A03

How can you determine that your station complies with FCC RF exposure regulations?

- A. By calculation based on FCC OET Bulletin 65
- B. By calculation based on computer modeling
- C. By measurement of field strength using calibrated equipment

✓ **D. All of these choices are correct**

2: G0B10

Which of the following is a danger from lead-tin solder?

✓ **A. Lead can contaminate food if hands are not washed carefully after handling the solder**

- B. High voltages can cause lead-tin solder to disintegrate suddenly
- C. Tin in the solder can "cold flow" causing shorts in the circuit
- D. RF energy can convert the lead into a poisonous gas

Subelement G1

3: G1A11

When General Class licensees are not permitted to use the entire voice portion of a particular band, which portion of the voice segment is generally available to them?

- A. The lower frequency end
- ✓ **B. The upper frequency end**
- C. The lower frequency end on frequencies below 7.3 MHz and the upper end on frequencies above 14.150 MHz

✗ *D. The upper frequency end on frequencies below 7.3 MHz and the lower end on frequencies above 14.150 MHz*

4: G1B04

Which of the following must be true before amateur stations may provide communications to broadcasters for dissemination to the public?

✓ **A. The communications must directly relate to the immediate safety of human life or protection of property and there must be no other means of communication reasonably available before or at the time of the event**

- B. The communications must be approved by a local emergency preparedness official and conducted on officially designated frequencies
- C. The FCC must have declared a state of emergency

D. All of these choices are correct

5: G1C02

What is the maximum transmitting power an amateur station may use on the 12-meter band?

- A. 50 watts PEP output
- B. 200 watts PEP output

☒ **C. 1500 watts PEP output**

- D. An effective radiated power equivalent to 100 watts from a half-wave dipole

6: G1D03

On which of the following band segments may you operate if you are a Technician Class operator and have a CSCE for General Class privileges?

A. Only the Technician band segments until your upgrade is posted in the FCC database

- B. Only on the Technician band segments until your license arrives in the mail

☒ **C. On any General or Technician Class band segment**

- D. On any General or Technician Class band segment except 30-meters and 60-meters

7: G1E04

Which of the following conditions require a licensed Amateur Radio operator to take specific steps to avoid harmful interference to other users or facilities?

- A. When operating within one mile of an FCC Monitoring Station
- B. When using a band where the Amateur Service is secondary
- C. When a station is transmitting spread spectrum emissions

☒ **D. All of these choices are correct**

Subelement G2

8: G2A03

Which of the following is most commonly used for SSB voice communications in the VHF and UHF bands?

☒ **A. Upper sideband**

- B. Lower sideband
- C. Vestigial sideband
- D. Double sideband

9: G2B12

When is an amateur station allowed to use any means at its disposal to assist another station in distress?

☒ **A. Only when transmitting in RACES**

- B. At any time when transmitting in an organized net

☒ **C. At any time during an actual emergency**

- D. Only on authorized HF frequencies

10: G2C08

What prosign is sent to indicate the end of a formal message when using CW?

- A. SK
- B. BK

☒ **C. AR**

- D. KN

11: G2D02

Which of the following are objectives of the Amateur Auxiliary?

- A. To conduct efficient and orderly amateur licensing examinations

☒ **B. To encourage self-regulation and compliance with the rules by radio amateur**

operators

- C. To coordinate repeaters for efficient and orderly spectrum usage
- D. To provide emergency and public safety communications

12: G2E04

What segment of the 20-meter band is most often used for digital transmissions?

- A. 14.000 - 14.050 MHz
- ✓ B. 14.070 - 14.100 MHz
- C. 14.150 - 14.225 MHz
- D. 14.275 - 14.350 MHz

Subelement G3

13: G3A04

Which of the following are least reliable for long distance communications during periods of low solar activity?

- A. 80 meters and 160 meters
- B. 60 meters and 40 meters
- C. 30 meters and 20 meters
- ✓ D. 15 meters, 12 meters and 10 meters

14: G3B10

What is the approximate maximum distance along the Earth's surface that is normally covered in one hop using the E region?

- A. 180 miles
- ✓ B. 1,200 miles
- C. 2,500 miles
- D. 12,000 miles

15: G3C10

Which of the following might be an indication that signals heard on the HF bands are being received via scatter propagation?

- A. The communication is during a sunspot maximum
- B. The communication is during a sudden ionospheric disturbance
- ✗ C. The signal is heard on a frequency below the Maximum Usable Frequency
- ✓ D. The signal is heard on a frequency above the Maximum Usable Frequency

Subelement G4

16: G4A10

What is the purpose of an electronic keyer?

- A. Automatic transmit/receive switching
- ✓ B. Automatic generation of strings of dots and dashes for CW operation
- C. VOX operation
- D. Computer interface for PSK and RTTY operation

17: G4B14

What is an instance in which the use of an instrument with analog readout may be preferred over an instrument with a digital readout?

- A. When testing logic circuits
- ✗ B. When high precision is desired
- C. When measuring the frequency of an oscillator
- ✓ D. When adjusting tuned circuits

18: G4C13

Which of the following can perform automatic notching of interfering carriers?

☐ **A. Bandpass tuning**

☒ **B. A Digital Signal Processor (DSP) filter**

C. Balanced mixing

D. A noise limiter

19: G4D03

Which of the following can be the result of an incorrectly adjusted speech processor?

A. Distorted speech

B. Splatter

C. Excessive background pickup

☒ **D. All of these choices are correct**

20: G4E02

What is the purpose of a corona ball on a HF mobile antenna?

A. To narrow the operating bandwidth of the antenna

B. To increase the "Q" of the antenna

C. To reduce the chance of damage if the antenna should strike an object

☒ **D. To reduce high voltage discharge from the tip of the antenna**

Subelement G5

21: G5A03

Which of the following causes opposition to the flow of alternating current in an inductor?

A. Conductance

B. Reluctance

C. Admittance

☒ **D. Reactance**

22: G5B13

What is the output PEP of an unmodulated carrier if an average reading wattmeter connected to the transmitter output indicates 1060 watts?

A. 530 watts

☒ **B. 1060 watts**

C. 1500 watts

D. 2120 watts

23: G5C07

What is the turns ratio of a transformer used to match an audio amplifier having 600 ohm output impedance to a speaker having 4 ohm impedance?

☒ **A. 12.2 to 1**

B. 24.4 to 1

C. 150 to 1

D. 300 to 1

Subelement G6

24: G6A14

Which of the following is an advantage of ceramic capacitors as compared to other types of capacitors?

A. Tight tolerance

- B. High stability
 B. Much less leakage than any other type
 C. High capacitance for given volume
 C. High capacitance for a given volume

✓ **D. Comparatively low cost**
 D. Inexpensive RF capacitor

25: G6B06

What kind of device is an integrated circuit operational amplifier?

- A. Digital
 B. MMIC
 C. Programmable Logic

✓ **D. Analog**

Subelement G7

26: G7A10

Which symbol in figure G7-1 represents a Zener diode?

- A. Symbol 4
 B. Symbol 1
 C. Symbol 11

✓ **D. Symbol 5**

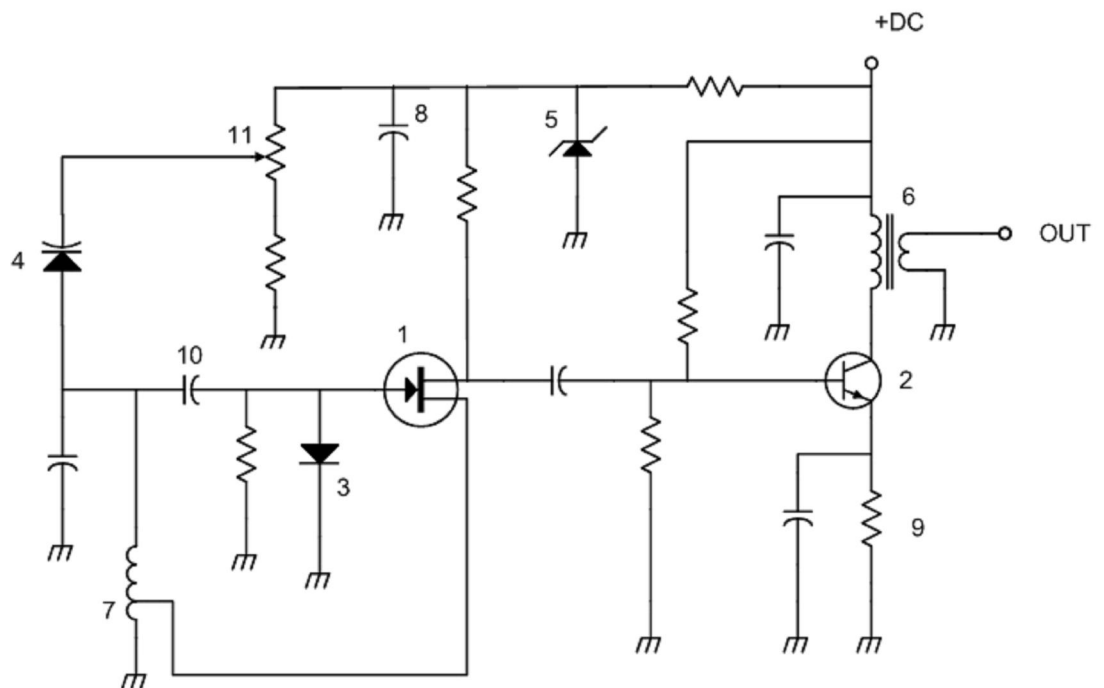


Figure G7-1

27: G7B13

What is the reason for neutralizing the final amplifier stage of a transmitter?

- A. To limit the modulation index
 ✓ **B. To eliminate self-oscillations**
 C. To cut off the final amplifier during standby periods
 D. To keep the carrier on frequency

28: G7C09

Which of the following is needed for a Digital Signal Processor IF filter?

☒ **A. An analog to digital converter**

- B. A digital to analog converter
- C. A digital processor chip

☒ **D. All of the these choices are correct**

Subelement G8

29: G8A08

Which of the following is an effect of overmodulation?

- A. Insufficient audio
- B. Insufficient bandwidth
- C. Frequency drift

☒ **D. Excessive bandwidth**

30: G8B05

What is the approximate bandwidth of a PACTOR3 signal at maximum data rate?

☒ **A. 31.5 Hz**

- B. 500 Hz
- C. 1800 Hz

☒ **D. 2300 Hz**

31: G8C02

How many data bits are sent in a single PSK31 character?

☒ **A. The number varies**

- B. 5
- C. 7
- D. 8

Subelement G9

32: G9A08

If the SWR on an antenna feed line is 5 to 1, and a matching network at the transmitter end of the feed line is adjusted to 1 to 1 SWR, what is the resulting SWR on the feed line?

A. 1 to 1

☒ **B. 5 to 1**

- C. Between 1 to 1 and 5 to 1 depending on the characteristic impedance of the line
- D. Between 1 to 1 and 5 to 1 depending on the reflected power at the transmitter

33: G9B11

What is the approximate length for a 1/2 wave dipole antenna cut for 3.550 MHz?

- A. 42 feet
- B. 84 feet

☒ **C. 131 feet**

D. 263 feet

34: G9C17

Approximately how long is each leg of a symmetrical delta-loop antenna?

A. 1/4 wavelength

☒ **B. 1/3 wavelength**

- C. 1/2 wavelength
- D. 2/3 wavelength

35: G9D07

Which of the following describes a log periodic antenna?

- ✓ A. Length and spacing of the elements increase logarithmically from one end of the boom to the other
- B. Impedance varies periodically as a function of frequency
- C. Gain varies logarithmically as a function of frequency
- D. SWR varies periodically as a function of boom length

Results:

You scored 28 correct answers and 7 incorrect answers from a total of 35.

You would have passed the exam! Congratulations!

e)

Click here to [take another test](#).

Please mail any comments to me, [Simon AA9PW](#), I appreciate your feedback. If you Like the site, please Like us on Facebook!

