

Results for sample technician2014 test paper

Your answers are marked like this:

✓ **A. You got this question right, this is your correct answer.**

✗ *A. You got this question wrong, this is your incorrect answer.*

✓ *A. You got this question wrong, this is the correct answer.*

✓ **A. You didnt answer this question but this would be the correct answer.**

Subelement T0

1: T0A11

What kind of hazard might exist in a power supply when it is turned off and disconnected?

- A. Static electricity could damage the grounding system
- B. Circulating currents inside the transformer might cause damage
- C. The fuse might blow if you remove the cover

✓ **D. You might receive an electric shock from the charged stored in large capacitors**

2: T0B02

What is a good precaution to observe before climbing an antenna tower?

- A. Make sure that you wear a grounded wrist strap
- B. Remove all tower grounding connections

✓ **C. Put on a climbing harness and safety glasses**

- D. All of the these choices are correct

3: T0C08

Which of the following actions might amateur operators take to prevent exposure to RF radiation in excess of FCC-supplied limits?

✓ **A. Relocate antennas**

- B. Relocate the transmitter
- C. Increase the duty cycle
- D. All of these choices are correct

Subelement T1

4: T1A11

When is willful interference to other amateur radio stations permitted?

A. Only if the station being interfered with is expressing extreme religious or political views

☒ **B. At no time**

C. Only during a contest

D. At any time, amateurs are not protected from willful interference

5: T1B06

Which 23 cm frequency is authorized to a Technician Class licensee?

A. 2315 MHz

☒ **B. 1296 MHz**

C. 3390 MHz

D. 146.52 MHz

6: T1C05

Which of the following is a vanity call sign which a technician class amateur operator might select if available?

☒ **A. K1XXX**

B. KA1X

C. W1XX

D. All of these choices are correct

7: T1D04

What is the only time an amateur station is authorized to transmit music?

☒ **A. When incidental to an authorized retransmission of manned spacecraft communications**

B. When the music produces no spurious emissions

C. When the purpose is to interfere with an illegal transmission

D. When the music is transmitted above 1280 MHz

8: T1E04

What determines the transmitting privileges of an amateur station?

A. The frequency authorized by the frequency coordinator

☒ **B. The class of operator license held by the station licensee**

C. The highest class of operator license held by anyone on the premises

☒ **D. The class of operator license held by the control operator**

9: T1F11

To which foreign stations do the FCC rules authorize the transmission of non-emergency third party communications?

☒ **A. Any station whose government permits such communications**

B. Those in ITU Region 2 only

C. Those in ITU Regions 2 and 3 only

D. Those in ITU Region 3 only

Subelement T2

10: T2A12

Which of the following is a guideline to use when choosing an operating frequency for calling CQ?

- A. Listen first to be sure that no one else is using the frequency
- B. Ask if the frequency is in use
- C. Make sure you are in your assigned band

✓ **D. All of these choices are correct**

11: T2B08

Which of the following applies when two stations transmitting on the same frequency interfere with each other?

✓ **A. Common courtesy should prevail, but no one has absolute right to an amateur frequency**

- B. Whoever has the strongest signal has priority on the frequency
- C. Whoever has been on the frequency the longest has priority on the frequency
- D. The station which has the weakest signal has priority on the frequency

12: T2C09

Are amateur station control operators ever permitted to operate outside the frequency privileges of their license class?

- A. No
- B. Yes, but only when part of a FEMA emergency plan
- C. Yes, but only when part of a RACES emergency plan

✓ **D. Yes, but only if necessary in situations involving the immediate safety of human life or protection of property**

Subelement T3

13: T3A06

What term is commonly used to describe the rapid fluttering sound sometimes heard from mobile stations that are moving while transmitting?

- A. Flip-flopping

✓ **B. Picket fencing**

- C. Frequency shifting
- D. Pulsing

14: T3B10

What frequency range is referred to as HF?

- A. 300 to 3000 MHz
- B. 30 to 300 MHz

✓ **C. 3 to 30 MHz**

- D. 300 to 3000 kHz

15: T3C03

What is a characteristic of VHF signals received via auroral reflection?

- A. Signals from distances of 10,000 or more miles are common

✓ **B. The signals exhibit rapid fluctuations of strength and often sound distorted**

- C. These types of signals occur only during winter nighttime hours
- D. These types of signals are generally strongest when your antenna is aimed west

Subelement T4

16: T4A07

How is a computer's sound card used when conducting digital communications using a computer?

- A. The sound card communicates between the computer CPU and the video display
- B. The sound card records the audio frequency for video display
- ✓ C. The sound card provides audio to the microphone input and converts received audio to digital form
- D. All of these choices are correct

17: T4B04

What is a way to enable quick access to a favorite frequency on your transceiver?

- A. Enable the CTCSS tones
- ✓ B. Store the frequency in a memory channel
- C. Disable the CTCSS tones
- D. Use the scan mode to select the desired frequency

Subelement T5

18: T5A03

What is the name for the flow of electrons in an electric circuit?

- A. Voltage
- B. Resistance
- C. Capacitance
- ✓ D. Current

19: T5B12

Which of the following frequencies is equal to 28,400 kHz?

- ✓ A. 28.400 MHz
- B. 2.800 MHz
- C. 284.00 MHz
- D. 28.400 kHz

20: T5C02

What is the basic unit of capacitance?

- ✓ A. The farad
- B. The ohm
- C. The volt
- D. The henry

21: T5D10

What is the voltage across a 2-ohm resistor if a current of 0.5 amperes flows through it?

- ☒ **A. 1 volt**
- B. 0.25 volts
- C. 2.5 volts
- D. 1.5 volts

Subelement T6

22: T6A01

What electrical component is used to oppose the flow of current in a DC circuit?

- A. Inductor
- ☒ **B. Resistor**
- C. Voltmeter
- D. Transformer

23: T6B05

Which of the following electronic components can amplify signals?

- ☒ **A. Transistor**
- B. Variable resistor
- C. Electrolytic capacitor
- D. Multi-cell battery

24: T6C03

What is component 2 in figure T1?

- A. Resistor
- ☒ **B. Transistor**
- C. Indicator lamp
- D. Connector

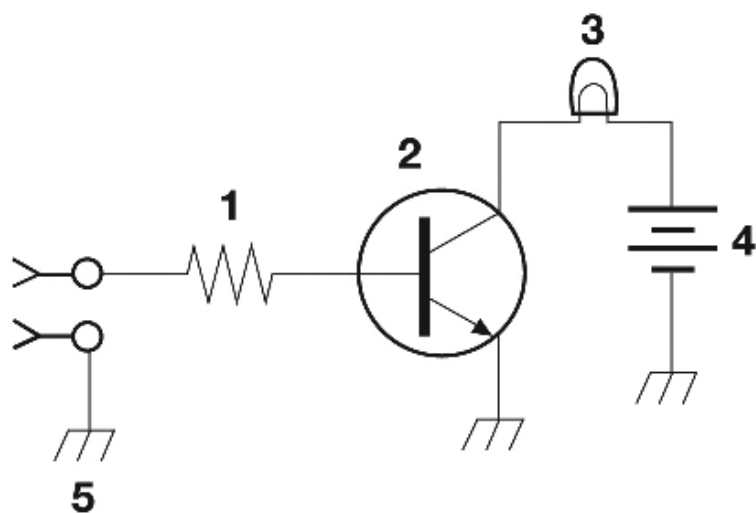


Figure T-1

25: T6D10

What is the function of component 2 in Figure T1?

- A. Give off light when current flows through it
- B. Supply electrical energy
- ✓ **C. Control the flow of current**
- D. Convert electrical energy into radio waves

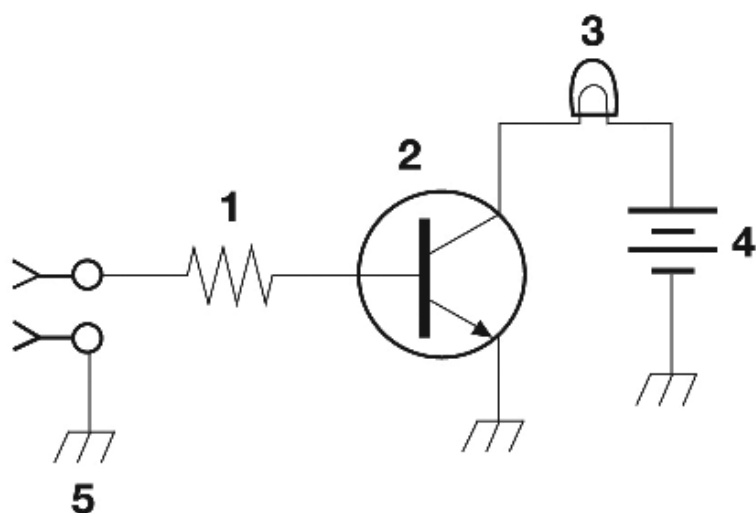


Figure T-1

Subelement T7

26: T7A08

Which of the following describes combining speech with an RF carrier signal?-

- A. Impedance matching
- B. Oscillation

✓ **C. Modulation**

- D. Low-pass filtering

27: T7B02

What would cause a broadcast AM or FM radio to receive an amateur radio transmission unintentionally?

✓ **A. The receiver is unable to reject strong signals outside the AM or FM band**

- B. The microphone gain of the transmitter is turned up too high
- C. The audio amplifier of the transmitter is overloaded
- D. The deviation of an FM transmitter is set too low

28: T7C12

Which of the following is a common use of coaxial cable?

- A. Carrying dc power from a vehicle battery to a mobile radio

✓ **B. Carrying RF signals between a radio and antenna**

- C. Securing masts, tubing, and other cylindrical objects on towers
- D. Connecting data signals from a TNC to a computer

29: T7D09

What is the characteristic appearance of a cold solder joint?

- A. Dark black spots
- B. A bright or shiny surface

✓ **C. A grainy or dull surface**

- D. A greenish tint

Subelement T8

30: T8A01

Which of the following is a form of amplitude modulation?

- A. Spread-spectrum
- B. Packet radio

✓ **C. Single sideband**

- D. Phase shift keying

31: T8B06

Which of the following are inputs to a satellite tracking program?

- A. The weight of the satellite

✓ **B. The Keplerian elements**

- C. The last observed time of zero Doppler shift
- D. All of these answers are correct

32: T8C07

What is the maximum power allowed when transmitting telecommand signals to radio controlled models?

- A. 500 milliwatts

✓ **B. 1 watt**

- C. 25 watts
- D. 1500 watts

33: T8D06

What does the abbreviation PSK mean?

- A. Pulse Shift Keying

✓ **B. Phase Shift Keying**

- C. Packet Short Keying
- D. Phased Slide Keying

Subelement T9

34: T9A08

What is the approximate length, in inches, of a quarter-wavelength vertical antenna for 146 MHz?

- A. 112
- B. 50

✓ **C. 19**

- D. 12

35: T9B09

What might cause erratic changes in SWR readings?

- A. The transmitter is being modulated

✓ **B. A loose connection in an antenna or a feed line**

- C. The transmitter is being over-modulated
- D. Interference from other stations is distorting your signal

Results:

You scored 34 correct answers and 1 incorrect answers from a total of 35.

You would have passed the exam! Congratulations!

e1

Click here to [take another test](#).

Please mail any comments to me, [Simon AA9PW](#), I appreciate your feedback. If you Like the site, please Like us on Facebook!



aa9pw
1,881 likes

Like Page

Share

Be the first of your friends to like this

