

## Results for sample technician2014 test paper

Your answers are marked like this:

✓ **A. You got this question right, this is your correct answer.**

✗ *A. You got this question wrong, this is your incorrect answer.*

✓ *A. You got this question wrong, this is the correct answer.*

✓ **A. You didnt answer this question but this would be the correct answer.**

---

### Subelement T0

1: T0A11

**What kind of hazard might exist in a power supply when it is turned off and disconnected?**

- A. Static electricity could damage the grounding system
- B. Circulating currents inside the transformer might cause damage
- C. The fuse might blow if you remove the cover

✓ **D. You might receive an electric shock from the charged stored in large capacitors**

2: T0B08

**What is considered to be a proper grounding method for a tower?**

- A. A single four-foot ground rod, driven into the ground no more than 12 inches from the base
- B. A ferrite-core RF choke connected between the tower and ground

✓ **C. Separate eight-foot long ground rods for each tower leg, bonded to the tower and each other**

- D. A connection between the tower base and a cold water pipe

3: T0C07

**What could happen if a person accidentally touched your antenna while you were transmitting?**

- A. Touching the antenna could cause television interference

✓ **B. They might receive a painful RF burn**

- C. They might develop radiation poisoning
- D. All of these choices are correct

### Subelement T1

4: T1A03

**Which part of the FCC regulations contains the rules governing the Amateur Radio Service?**

- A. Part 73
- B. Part 95
- C. Part 90

✓ **D. Part 97**

5: T1B07

**What amateur band are you using if you are transmitting on 223.50 MHz?**

- A. 15 meter band
- B. 10 meter band
- C. 2 meter band

✓ **D. 1.25 meter band**

6: T1C03

**What types of international communications are permitted by an FCC-licensed amateur station?**

✓ **A. Communications incidental to the purposes of the amateur service and remarks of a personal character**

- B. Communications incidental to conducting business or remarks of a personal nature
- C. Only communications incidental to contest exchanges, all other communications are prohibited
- D. Any communications that would be permitted by an international broadcast station

7: T1D01

**With which countries are FCC-licensed amateur stations prohibited from exchanging communications?**

✓ **A. Any country whose administration has notified the ITU that it objects to such communications**

✗ **B. Any country whose administration has notified the ARRL that it objects to such communications**

- C. Any country engaged in hostilities with another country
- D. Any country in violation of the War Powers Act of 1934

8: T1E06

**Under what type of control do APRS network digipeaters operate?**

✓ **A. Automatic**

- B. Remote
- C. Local
- D. Manual

9: T1F11

**To which foreign stations do the FCC rules authorize the transmission of non-emergency third party communications?**

✓ **A. Any station whose government permits such communications**

- B. Those in ITU Region 2 only
- C. Those in ITU Regions 2 and 3 only
- D. Those in ITU Region 3 only

## Subelement T2

10: T2A03

**What is a common repeater frequency offset in the 70 cm band?**

✓ **A. Plus or minus 5 MHz**

✗ **B. Plus or minus 600 kHz**

C. Minus 600 kHz

D. Plus 600 kHz

11: T2B03

**Which of the following describes the muting of receiver audio controlled solely by the presence or absence of an RF signal?**

A. Tone squelch

✓ **B. Carrier squelch**

C. CTCSS

D. Modulated carrier

12: T2C06

**Which of the following is an accepted practice to get the immediate attention of a net control station when reporting an emergency?**

A. Repeat the words SOS three times followed by the call sign of the reporting station

B. Press the push-to-talk button three times

✓ **C. Begin your transmission by saying "Priority" or "Emergency" followed by your call sign**

D. Play a pre-recorded emergency alert tone followed by your call sign

## Subelement T3

13: T3A10

**What may occur if data signals propagate over multiple paths?**

A. Transmission rates can be increased by a factor equal to the number of separate paths observed

B. Transmission rates must be decreased by a factor equal to the number of separate paths observed

C. No significant changes will occur if the signals are transmitting using FM

✓ **D. Error rates are likely to increase**

14: T3B11

**What is the approximate velocity of a radio wave as it travels through free space?**

A. 3000 kilometers per second

✓ **B. 300,000,000 meters per second**

C. 300,000 miles per hour

D. 186,000 miles per hour

15: T3C02

**Which of the following might be happening when VHF signals are being received from long distances?**

- A. Signals are being reflected from outer space
- B. Signals are arriving by sub-surface ducting
- C. Signals are being reflected by lightning storms in your area

✓ **D. Signals are being refracted from a sporadic E layer**

## Subelement T4

16: T4A02

**How might a computer be used as part of an amateur radio station?**

- A. For logging contacts and contact information
- B. For sending and/or receiving CW
- C. For generating and decoding digital signals

✓ **D. All of these choices are correct**

17: T4B01

**What may happen if a transmitter is operated with the microphone gain set too high?**

- A. The output power might be too high

✓ **B. The output signal might become distorted**

- C. The frequency might vary
- D. The SWR might increase

## Subelement T5

18: T5A08

**Which of the following is a good electrical insulator?**

✗ **A. Copper**

✓ **B. Glass**

- C. Aluminum
- D. Mercury

19: T5B02

**What is another way to specify a radio signal frequency of 1,500,000 hertz?**

✓ **A. 1500 kHz**

- B. 1500 MHz
- C. 15 GHz
- D. 150 kHz

20: T5C02

**What is the basic unit of capacitance?**

✓ **A. The farad**

- B. The ohm
- C. The volt
- D. The henry

21: T5D09

**What is the current flowing through a 24-ohm resistor connected across 240 volts?**

- A. 24,000 amperes
- B. 0.1 amperes
- ✓ **C. 10 amperes**
- D. 216 amperes

## Subelement T6

22: T6A02

**What type of component is often used as an adjustable volume control?**

- A. Fixed resistor
- B. Power resistor
- ✓ **C. Potentiometer**
- D. Transformer

23: T6B06

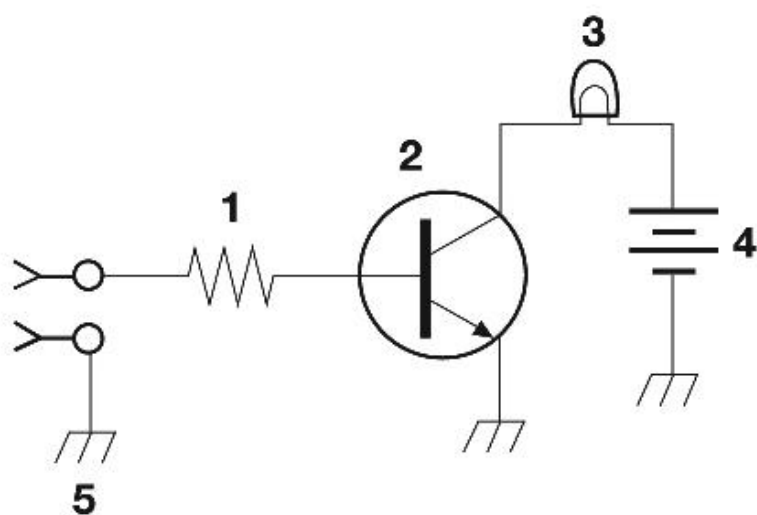
**How is the cathode lead of a semiconductor diode usually identified?**

- A. With the word cathode
- ✓ **B. With a stripe**
- C. With the letter C
- D. All of these choices are correct

24: T6C02

**What is component 1 in figure T1?**

- ✓ **A. Resistor**
- B. Transistor
- C. Battery
- D. Connector



**Figure T-1**

25: T6D06

**What component is commonly used to change 120V AC house current to a lower AC voltage for other uses?**

- A. Variable capacitor
- ✓ **B. Transformer**
- C. Transistor
- D. Diode

## Subelement T7

26: T7A09

**Which of the following devices is most useful for VHF weak-signal communication?**

- A. A quarter-wave vertical antenna
- ✓ **B. A multi-mode VHF transceiver**
- C. An omni-directional antenna
- D. A mobile VHF FM transceiver

27: T7B11

**What is a symptom of RF feedback in a transmitter or transceiver?**

- A. Excessive SWR at the antenna connection
- B. The transmitter will not stay on the desired frequency
- ✓ **C. Reports of garbled, distorted, or unintelligible transmissions**
- D. Frequent blowing of power supply fuses

28: T7C13

**What does a dummy load consist of?**

- A. A high-gain amplifier and a TR switch

☒ **B. A non-inductive resistor and a heat sink**

- C. A low voltage power supply and a DC relay
- D. A 50 ohm reactance used to terminate a transmission line

29: T7D06

**Which of the following might damage a multimeter?**

- A. Measuring a voltage too small for the chosen scale
- B. Leaving the meter in the milliamps position overnight
- ☒ **C. Attempting to measure voltage when using the resistance setting**
- D. Not allowing it to warm up properly

## Subelement T8

30: T8A05

**Which of the following types of emission has the narrowest bandwidth?**

- A. FM voice
- B. SSB voice
- ☒ **C. CW**
- D. Slow-scan TV

31: T8B01

**Who may be the control operator of a station communicating through an amateur satellite or space station?**

- A. Only an Amateur Extra Class operator
- B. A General Class licensee or higher licensee who has a satellite operator certification
- C. Only an Amateur Extra Class operator who is also an AMSAT member
- ☒ **D. Any amateur whose license privileges allow them to transmit on the satellite uplink frequency**

32: T8C06

**How is access to an IRLP node accomplished?**

- ☒ **A. By obtaining a password which is sent via voice to the node**
- ☒ **B. By using DTMF signals**
- C. By entering the proper Internet password
- D. By using CTCSS tone codes

33: T8D02

**What does the term APRS mean?**

- ☒ **A. Automatic Packet Reporting System**
- B. Associated Public Radio Station
- C. Auto Planning Radio Set-up
- D. Advanced Polar Radio System

## Subelement T9

34: T9A08

**What is the approximate length, in inches, of a quarter-wavelength vertical antenna for 146 MHz?**

- A. 112
- B. 50

✓ **C. 19**

- D. 12

35: T9B06

**Which of the following connectors is most suitable for frequencies above 400 MHz?**

- A. A UHF (PL-259/SO-239) connector

✓ **B. A Type N connector**

- C. An RS-213 connector
- D. A DB-25 connector

**Results:**

**You scored 31 correct answers and 4 incorrect answers from a total of 35.**

**You would have passed the exam! Congratulations!**

e1

Click here to [take another test](#).

Please mail any comments to me, [Simon AA9PW](#), I appreciate your feedback. If you Like the site, please Like us on Facebook!



aa9pw

1,883 likes

