

Results for sample technician2014 test paper

Your answers are marked like this:

✓ **A. You got this question right, this is your correct answer.**

✗ *A. You got this question wrong, this is your incorrect answer.*

✓ *A. You got this question wrong, this is the correct answer.*

✓ **A. You didnt answer this question but this would be the correct answer.**

Subelement T0

1: T0A05

Why is it unwise to install a 20-ampere fuse in the place of a 5-ampere fuse?

- A. The larger fuse would be likely to blow because it is rated for higher current
- B. The power supply ripple would greatly increase

✓ **C. Excessive current could cause a fire**

- D. All of these choices are correct

2: T0B10

Which of the following is true concerning grounding conductors used for lightning protection?

- A. Only non-insulated wire must be used
- B. Wires must be carefully routed with precise right-angle bends

✓ **C. Sharp bends must be avoided**

- D. Common grounds must be avoided

3: T0C08

Which of the following actions might amateur operators take to prevent exposure to RF radiation in excess of FCC-supplied limits?

✓ **A. Relocate antennas**

- B. Relocate the transmitter
- C. Increase the duty cycle
- D. All of these choices are correct

Subelement T1

4: T1A03

Which part of the FCC regulations contains the rules governing the Amateur Radio

Service?

- A. Part 73
- B. Part 95
- C. Part 90

✓ **D. Part 97**

5: T1B06

Which 23 cm frequency is authorized to a Technician Class licensee?

A. 2315 MHz

✓ **B. 1296 MHz**

C. 3390 MHz

D. 146.52 MHz

6: T1C10

How soon after passing the examination for your first amateur radio license may you operate a transmitter on an amateur service frequency?

A. Immediately

B. 30 days after the test date

✓ **C. As soon as your operator/station license grant appears in the FCC s license database**

D. You must wait until you receive your license in the mail from the FCC

7: T1D05

When may amateur radio operators use their stations to notify other amateurs of the availability of equipment for sale or trade?

✓ **A. When the equipment is normally used in an amateur station and such activity is not conducted on a regular basis**

B. When the asking price is \$100.00 or less

C. When the asking price is less than its appraised value

D. When the equipment is not the personal property of either the station licensee or the control operator or their close relatives

8: T1E02

Who may a station licensee designate to be the control operator of an amateur station?

A. Any U.S. citizen or registered alien

B. Any family member of the station licensee

C. Any person over the age of 18

✓ **D. Only a person for whom an amateur operator/primary station license grant appears in the FCC database or who is authorized for alien reciprocal operation**

9: T1F02

When using tactical identifiers such as Race Headquarters during a community service net operation, how often must your station transmit the station s FCC-assigned call sign?

A. Never, the tactical call is sufficient

B. Once during every hour

✓ **C. At the end of each communication and every ten minutes during a communication**

D. At the end of every transmission

Subelement T2

10: T2A09

What brief statement is often transmitted in place of CQ to indicate that you are listening on a repeater?

- A. The words Hello test followed by your call sign
- ✓ **B. Your call sign**
- C. The repeater call sign followed by your call sign
- D. The letters QSY followed by your call sign

11: T2B10

Which Q signal indicates that you are receiving interference from other stations?

- ✓ **A. QRM**
- B. QRN
- C. QTH
- D. QSB

12: T2C04

What do RACES and ARES have in common?

- A. They represent the two largest ham clubs in the United States
- B. Both organizations broadcast road and weather information
- xC. Neither may handle emergency traffic supporting public service agencies
- ✓ **D. Both organizations may provide communications during emergencies**

Subelement T3

13: T3A07

What type of wave carries radio signals between transmitting and receiving stations?

- ✓ **A. Electromagnetic**
- B. Electrostatic
- C. Surface acoustic
- D. Magnetostrictive

14: T3B05

How does the wavelength of a radio wave relate to its frequency?

- A. The wavelength gets longer as the frequency increases
- ✓ **B. The wavelength gets shorter as the frequency increases**
- C. There is no relationship between wavelength and frequency
- D. The wavelength depends on the bandwidth of the signal

15: T3C09

What is generally the best time for long-distance 10 meter band propagation via

the F layer?

- ☒ **A. From dawn to shortly after sunset during periods of high sunspot activity**
- B. From shortly after sunset to dawn during periods of high sunspot activity
- C. From dawn to shortly after sunset during periods of low sunspot activity
- D. From shortly after sunset to dawn during periods of low sunspot activity

Subelement T4

16: T4A07

How is a computer's sound card used when conducting digital communications using a computer?

- A. The sound card communicates between the computer CPU and the video display
- B. The sound card records the audio frequency for video display
- ☒ **C. The sound card provides audio to the microphone input and converts received audio to digital form**
- D. All of these choices are correct

17: T4B02

Which of the following can be used to enter the operating frequency on a modern transceiver?

- ☒ **A. The keypad or VFO knob**
- B. The CTCSS or DTMF encoder
- C. The Automatic Frequency Control
- D. All of these choices are correct

Subelement T5

18: T5A09

What is the name for a current that reverses direction on a regular basis?

- ☒ **A. Alternating current**
- B. Direct current
- C. Circular current
- D. Vertical current

19: T5B05

Which of the following is equivalent to 500 milliwatts?

- A. 0.02 watts
- ☒ **B. 0.5 watts**
- C. 5 watts
- D. 50 watts

20: T5C09

How much power is being used in a circuit when the applied voltage is 13.8 volts DC and the current is 10 amperes?

- ☒ **A. 138 watts**

- B. 0.7 watts
- C. 23.8 watts
- D. 3.8 watts

21: T5D06

What is the resistance of a circuit that draws 4 amperes from a 12-volt source?

✓ **A. 3 ohms**

- B. 16 ohms
- C. 48 ohms
- D. 8 Ohms

Subelement T6

22: T6A04

What electrical component stores energy in an electric field?

A. Resistor

✓ **B. Capacitor**

- C. Inductor
- D. Diode

23: T6B05

Which of the following electronic components can amplify signals?

✓ **A. Transistor**

- B. Variable resistor
- C. Electrolytic capacitor
- D. Multi-cell battery

24: T6C02

What is component 1 in figure T1?

✓ **A. Resistor**

- B. Transistor
- C. Battery
- D. Connector

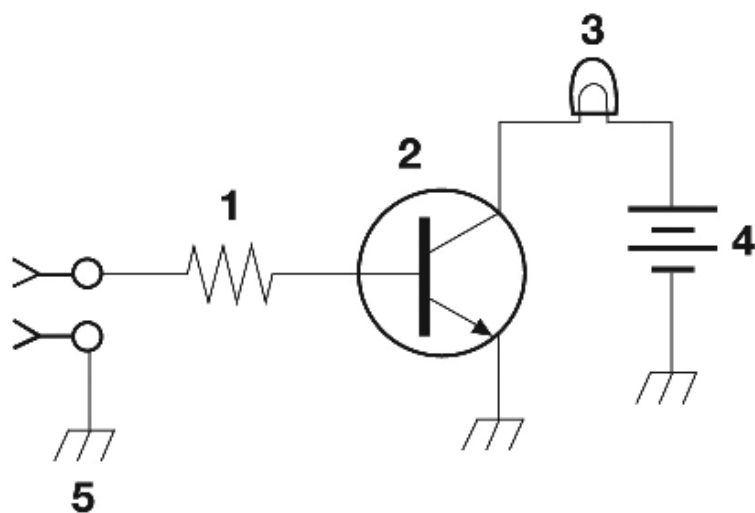


Figure T-1

25: T6D01

Which of the following devices or circuits changes an alternating current into a varying direct current signal?

- A. Transformer
- ✓ B. Rectifier
- C. Amplifier
- D. Reflector

Subelement T7

26: T7A10

What device increases the low-power output from a handheld transceiver?

- A. A voltage divider
- ✓ B. An RF power amplifier
- C. An impedance network
- D. All of these choices are correct

27: T7B07

Which of the following may be useful in correcting a radio frequency interference problem?

- A. Snap-on ferrite chokes
- B. Low-pass and high-pass filters
- ✗ C. Band-reject and band-pass filters
- ✓ D. All of these choices are correct

28: T7C12

Which of the following is a common use of coaxial cable?

- A. Carrying dc power from a vehicle battery to a mobile radio

✓ B. Carrying RF signals between a radio and antenna

- C. Securing masts, tubing, and other cylindrical objects on towers
- D. Connecting data signals from a TNC to a computer

29: T7D12

Which of the following precautions should be taken when measuring high voltages with a voltmeter?

- A. Ensure that the voltmeter has very low impedance

✓ B. Ensure that the voltmeter and leads are rated for use at the voltages to be measured

- C. Ensure that the circuit is grounded through the voltmeter
- D. Ensure that the voltmeter is set to the correct frequency

Subelement T8

30: T8A01

Which of the following is a form of amplitude modulation?

- A. Spread-spectrum
- B. Packet radio

✓ C. Single sideband

- D. Phase shift keying

31: T8B05

What is a satellite beacon?

- A. The primary transmit antenna on the satellite
- B. An indicator light that shows where to point your antenna
- C. A reflective surface on the satellite

✓ D. A transmission from a space station that contains information about a satellite

32: T8C03

What popular operating activity involves contacting as many stations as possible during a specified period of time?

✓ A. Contesting

- B. Net operations
- C. Public service events
- D. Simulated emergency exercises

33: T8D10

Which of the following can be used to transmit CW in the amateur bands?

- A. Straight Key
- B. Electronic Keyer
- C. Computer Keyboard

✓ D. All of these choices are correct

Subelement T9

34: T9A05

How would you change a dipole antenna to make it resonant on a higher frequency?

- A. Lengthen it
- B. Insert coils in series with radiating wires
- ✓ C. Shorten it
- D. Add capacitive loading to the ends of the radiating wires

35: T9B03

Why is coaxial cable used more often than any other feed line for amateur radio antenna systems?

- ✓ A. It is easy to use and requires few special installation considerations
- B. It has less loss than any other type of feed line
- C. It can handle more power than any other type of feed line
- D. It is less expensive than any other types of feed line

Results:

You scored 33 correct answers and 2 incorrect answers from a total of 35.

You would have passed the exam! Congratulations!

e1

Click here to [take another test](#).

Please mail any comments to me, [Simon AA9PW](#), I appreciate your feedback. If you Like the site, please Like us on Facebook!



aa9pw
1,885 likes

