

## Results for sample technician2014 test paper

Your answers are marked like this:

✓ **A. You got this question right, this is your correct answer.**

✗ *A. You got this question wrong, this is your incorrect answer.*

✓ *A. You got this question wrong, this is the correct answer.*

✓ **A. You didnt answer this question but this would be the correct answer.**

### Subelement T0

1: T0A02

**How does current flowing through the body cause a health hazard?**

- A. By heating tissue
- B. It disrupts the electrical functions of cells

✗ *C. It causes involuntary muscle contractions*

✓ **D. All of these choices are correct**

2: T0B03

**Under what circumstances is it safe to climb a tower without a helper or observer?**

- A. When no electrical work is being performed
- B. When no mechanical work is being performed
- C. When the work being done is not more than 20 feet above the ground

✓ **D. Never**

3: T0C01

**What type of radiation are VHF and UHF radio signals?**

- A. Gamma radiation
- B. Ionizing radiation
- C. Alpha radiation

✓ **D. Non-ionizing radiation**

### Subelement T1

4: T1A11

**When is willful interference to other amateur radio stations permitted?**

- A. Only if the station being interfered with is expressing extreme religious or political views

✓ **B. At no time**

- C. Only during a contest
- D. At any time, amateurs are not protected from willful interference

5: T1B11

**What emission modes are permitted in the mode-restricted sub-bands at 50.0 to 50.1 MHz and 144.0 to 144.1 MHz?**

- ✓ A. CW only
- B. CW and RTTY
- C. SSB only
- D. CW and SSB

6: T1C09

**What is the grace period following the expiration of an amateur license within which the license may be renewed?**

- ✓ A. Two years
- B. Three years
- C. Five years

xD. Ten years

7: T1D02

**On which of the following occasions may an FCC-licensed amateur station exchange messages with a U.S. military station?**

- ✓ A. During an Armed Forces Day Communications Test
- B. During a Memorial Day Celebration
- C. During an Independence Day celebration
- D. During a propagation test

8: T1E05

**What is an amateur station control point?**

- A. The location of the station's transmitting antenna
- B. The location of the station transmitting apparatus
- ✓ C. The location at which the control operator function is performed
- D. The mailing address of the station licensee

9: T1F08

**Which indicator is required by the FCC to be transmitted after a station call sign?**

- A. /M when operating mobile
- B. /R when operating a repeater
- C. / followed the FCC Region number when operating out of the region in which the license was issued

✓ D. /KT, /AE or /AG when using new license privileges earned by CSCE while waiting for an upgrade to a previously issued license to appear in the FCC license database

## Subelement T2

10: T2A10

**What is a band plan, beyond the privileges established by the FCC?**

- ☒ **A. A voluntary guideline for using different modes or activities within an amateur band**
- B. A mandated list of operating schedules
- C. A list of scheduled net frequencies
- D. A plan devised by a club to indicate frequency band usage

11: T2B08

**Which of the following applies when two stations transmitting on the same frequency interfere with each other?**

- ☒ **A. Common courtesy should prevail, but no one has absolute right to an amateur frequency**
- B. Whoever has the strongest signal has priority on the frequency
- C. Whoever has been on the frequency the longest has priority on the frequency
- D. The station which has the weakest signal has priority on the frequency

12: T2C05

**Which of the following describes the Radio Amateur Civil Emergency Service (RACES)?**

- A. A radio service using amateur frequencies for emergency management or civil defense communications
- ☒ **B. A radio service using amateur stations for emergency management or civil defense communications**
- C. An emergency service using amateur operators certified by a civil defense organization as being enrolled in that organization
- ☒ **D. All of these choices are correct**

## Subelement T3

13: T3A05

**When using a directional antenna, how might your station be able to access a distant repeater if buildings or obstructions are blocking the direct line of sight path?**

- A. Change from vertical to horizontal polarization
- ☒ **B. Try to find a path that reflects signals to the repeater**
- C. Try the long path
- D. Increase the antenna SWR

14: T3B01

**What is the name for the distance a radio wave travels during one complete cycle?**

- A. Wave speed
- B. Waveform
- ☒ **C. Wavelength**
- D. Wave spread

15: T3C11

**Why do VHF and UHF radio signals usually travel somewhat farther than the visual line of sight distance between two stations?**

- A. Radio signals move somewhat faster than the speed of light
- B. Radio waves are not blocked by dust particles
- ☒ **C. The Earth seems less curved to radio waves than to light**
- D. Radio waves are blocked by dust particles

## Subelement T4

16: T4A06

**Which of the following would be connected between a transceiver and computer in a packet radio station?**

- A. Transmatch
- B. Mixer
- ☒ **C. Terminal node controller**
- D. Antenna

17: T4B08

**What is the advantage of having multiple receive bandwidth choices on a multimode transceiver?**

- A. Permits monitoring several modes at once
- ☒ **B. Permits noise or interference reduction by selecting a bandwidth matching the mode**
- ☒ **C. Increases the number of frequencies that can be stored in memory**
- D. Increases the amount of offset between receive and transmit frequencies

## Subelement T5

18: T5A02

**Electrical power is measured in which of the following units?**

- A. Volts
- ☒ **B. Watts**
- C. Ohms
- D. Amperes

19: T5B06

**If an ammeter calibrated in amperes is used to measure a 3000-milliampere current, what reading would it show?**

- A. 0.003 amperes
- B. 0.3 amperes
- ☒ **C. 3 amperes**
- D. 3,000,000 amperes

20: T5C09

**How much power is being used in a circuit when the applied voltage is 13.8 volts DC and the current is 10 amperes?**

- ☒ **A. 138 watts**

- B. 0.7 watts
- C. 23.8 watts
- D. 3.8 watts

21: T5D12

**What is the voltage across a 10-ohm resistor if a current of 2 amperes flows through it?**

- A. 8 volts
- B. 0.2 volts
- C. 12 volts
- ✓ **D. 20 volts**

## Subelement T6

22: T6A01

**What electrical component is used to oppose the flow of current in a DC circuit?**

- x **A. Inductor**
- ✓ **B. Resistor**
- C. Voltmeter
- D. Transformer

23: T6B06

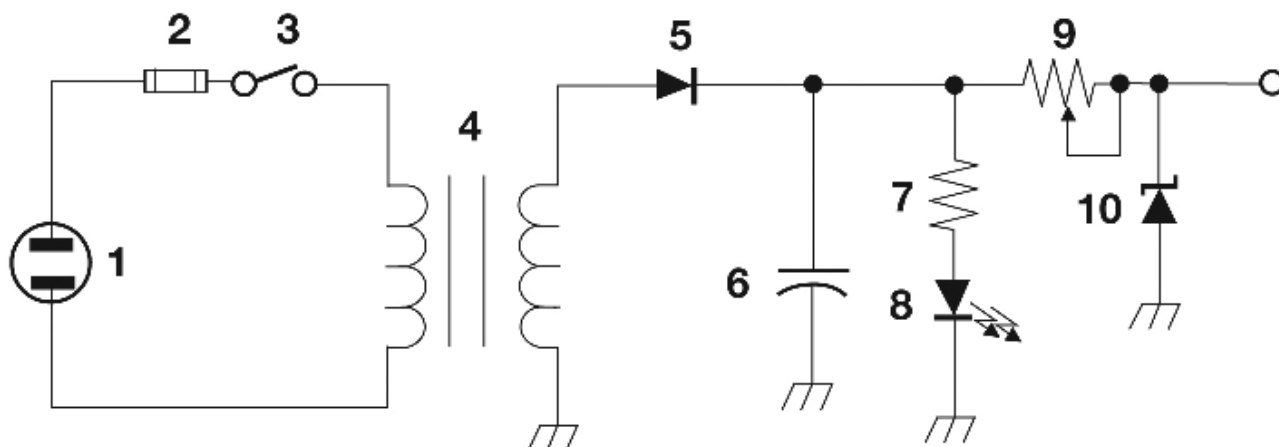
**How is the cathode lead of a semiconductor diode usually identified?**

- A. With the word cathode
- ✓ **B. With a stripe**
- C. With the letter C
- D. All of these choices are correct

24: T6C07

**What is component 8 in figure T2?**

- A. Resistor
- B. Inductor
- C. Regulator IC
- ✓ **D. Light emitting diode**

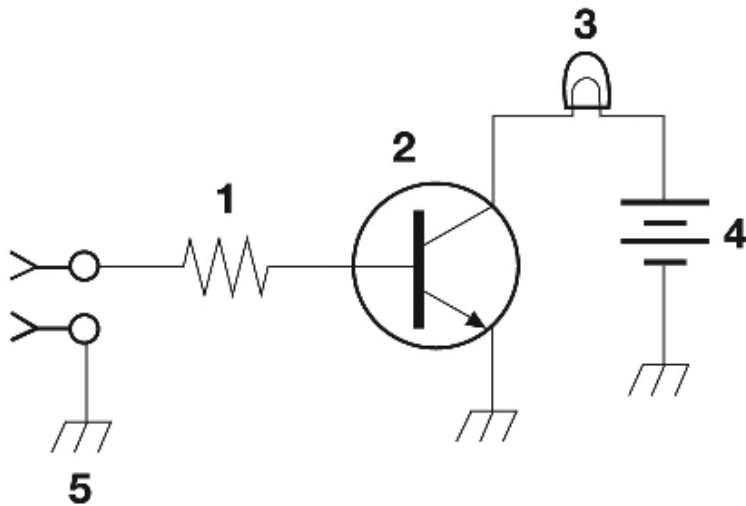


**Figure T-2**

25: T6D10

**What is the function of component 2 in Figure T1?**

- A. Give off light when current flows through it
- B. Supply electrical energy
- ✓ **C. Control the flow of current**
- D. Convert electrical energy into radio waves



**Figure T-1**

## Subelement T7

26: T7A07

**What is meant by term PTT ?**

- A. Pre-transmission tuning to reduce transmitter harmonic emission

- B. Precise tone transmissions used to limit repeater access to only certain signals
- C. A primary transformer tuner use to match antennas

✓ **D. The push to talk function which switches between receive and transmit**

27: T7B04

**Which of the following is a way to reduce or eliminate interference by an amateur transmitter to a nearby telephone?**

- A. Put a filter on the amateur transmitter
- B. Reduce the microphone gain
- C. Reduce the SWR on the transmitter transmission line

✓ **D. Put a RF filter on the telephone**

28: T7C06

**What does an SWR reading of 4:1 indicate?**

- A. Loss of -4dB
- B. Good impedance match
- C. Gain of +4dB

✓ **D. Impedance mismatch**

29: T7D10

**What is probably happening when an ohmmeter, connected across an unpowered circuit, initially indicates a low resistance and then shows increasing resistance with time?**

- A. The ohmmeter is defective

✓ **B. The circuit contains a large capacitor**

- C. The circuit contains a large inductor
- D. The circuit is a relaxation oscillator

## Subelement T8

30: T8A06

**Which sideband is normally used for 10 meter HF, VHF and UHF single-sideband communications?**

✓ **A. Upper sideband**

- B. Lower sideband
- C. Suppressed sideband
- D. Inverted sideband

31: T8B09

**What causes spin fading when referring to satellite signals?**

- A. Circular polarized noise interference radiated from the sun

✓ **B. Rotation of the satellite and its antennas**

- C. Doppler shift of the received signal
- D. Interfering signals within the satellite uplink band

32: T8C03

**What popular operating activity involves contacting as many stations as possible**

during a specified period of time?

- ☒ **A. Contesting**
- ☐ B. Net operations
- ☐ C. Public service events
- ☐ D. Simulated emergency exercises

33: T8D09

What code is used when sending CW in the amateur bands?

- ☐ A. Baudot
- ☐ B. Hamming
- ☒ **C. International Morse**
- ☐ D. Gray

## Subelement T9

34: T9A02

Which of the following is true regarding vertical antennas?

- ☐ A. The magnetic field is perpendicular to the Earth
- ☒ **B. The electric field is perpendicular to the Earth**
- ☐ C. The phase is inverted
- ☐ D. The phase is reversed

35: T9B05

What generally happens as the frequency of a signal passing through coaxial cable is increased?

- ☐ A. The apparent SWR increases
- ☐ B. The reflected power increases
- ☐ C. The characteristic impedance increases
- ☒ **D. The loss increases**

**Results:**

**You scored 30 correct answers and 5 incorrect answers from a total of 35.**

**You would have passed the exam! Congratulations!**

e)

---

Click here to [take another test](#).

Please mail any comments to me, [Simon AA9PW](#), I appreciate your feedback. If you Like the site, please Like us on Facebook!





Like Page

Share

Be the first of your friends to like this

A horizontal row of eight small, square profile pictures of various people, likely friends of the user, displayed below the text 'Be the first of your friends to like this'.