

Results for sample technician2014 test paper

Your answers are marked like this:

✓ **A. You got this question right, this is your correct answer.**

✗ *A. You got this question wrong, this is your incorrect answer.*

✓ *A. You got this question wrong, this is the correct answer.*

✓ **A. You didnt answer this question but this would be the correct answer.**

Subelement T0

1: T0A07

Which of these precautions should be taken when installing devices for lightning protection in a coaxial cable feed line?

A. Include a parallel bypass switch for each protector so that it can be switched out of the circuit when running high power

✗ B. Include a series switch in the ground line of each protector to prevent RF overload from inadvertently damaging the protector

C. Keep the ground wires from each protector separate and connected to station ground

✓ **D. Ground all of the protectors to a common plate which is in turn connected to an external ground**

2: T0B05

What is the purpose of a gin pole?

✗ A. To temporarily replace guy wires

B. To be used in place of a safety harness

✓ **C. To lift tower sections or antennas**

D. To provide a temporary ground

3: T0C10

Why is duty cycle one of the factors used to determine safe RF radiation exposure levels?

✓ **A. It affects the average exposure of people to radiation**

B. It affects the peak exposure of people to radiation

C. It takes into account the antenna feed line loss

D. It takes into account the thermal effects of the final amplifier

Subelement T1

4: T1A04

Which of the following meets the FCC definition of harmful interference?

- A. Radio transmissions that annoy users of a repeater
- B. Unwanted radio transmissions that cause costly harm to radio station apparatus
- ☒ **C. That which seriously degrades, obstructs, or repeatedly interrupts a radio communication service operating in accordance with the Radio Regulations**
- D. Static from lightning storms

5: T1B08

Which of the following is a result of the fact that the amateur service is secondary in some portions of the 70 cm band?

- ☒ **A. U.S. amateurs may find non-amateur stations in the bands, and must avoid interfering with them**
- B. U.S. amateurs must give foreign amateur stations priority in those portions
- C. International communications are not permitted on 70 cm
- D. Digital transmissions are not permitted on 70 cm

6: T1C14

Who may select a vanity call sign for a club station?

- A. Any Extra Class member of the club
- B. Any member of the club
- C. Any officer of the club
- ☒ **D. Only the person named as trustee on the club station license grant**

7: T1D02

On which of the following occasions may an FCC-licensed amateur station exchange messages with a U.S. military station?

- ☒ **A. During an Armed Forces Day Communications Test**
- B. During a Memorial Day Celebration
- C. During an Independence Day celebration
- D. During a propagation test

8: T1E09

What type of control is being used when the control operator is at the control point?

- A. Radio control
- B. Unattended control
- C. Automatic control
- ☒ **D. Local control**

9: T1F04

Which of the following is an acceptable language to use for station identification when operating in a phone sub-band?

- A. Any language recognized by the United Nations
- B. Any language recognized by the ITU
- ☒ **C. The English language**
- D. English, French, or Spanish

Subelement T2

10: T2A12

Which of the following is a guideline to use when choosing an operating frequency for calling CQ?

- A. Listen first to be sure that no one else is using the frequency
- B. Ask if the frequency is in use
- C. Make sure you are in your assigned band
- ✓ **D. All of these choices are correct**

11: T2B09

Which of the following methods is encouraged by the FCC when identifying your station when using phone?

- ✓ **A. Use of a phonetic alphabet**
- B. Send your call sign in CW as well as voice
- C. Repeat your call sign three times
- D. Increase your signal to full power when identifying

12: T2C09

Are amateur station control operators ever permitted to operate outside the frequency privileges of their license class?

- A. No
- B. Yes, but only when part of a FEMA emergency plan
- C. Yes, but only when part of a RACES emergency plan
- ✓ **D. Yes, but only if necessary in situations involving the immediate safety of human life or protection of property**

Subelement T3

13: T3A06

What term is commonly used to describe the rapid fluttering sound sometimes heard from mobile stations that are moving while transmitting?

- A. Flip-flopping
- ✓ **B. Picket fencing**
- C. Frequency shifting
- D. Pulsing

14: T3B08

What are the frequency limits of the VHF spectrum?

- A. 30 to 300 kHz
- ✓ **B. 30 to 300 MHz**
- C. 300 to 3000 kHz
- D. 300 to 3000 MHz

15: T3C12

Which of the following bands may provide long distance communications during the peak of the sunspot cycle?

- ☒ **A. Six or ten meters**
- B. 23 centimeters
- C. 70 centimeters or 1.25 meters
- D. All of these choices are correct

Subelement T4

16: T4A08

Which type of conductor is best to use for RF grounding?

- A. Round stranded wire
- B. Round copper-clad steel wire
- C. Twisted-pair cable
- ☒ **D. Flat strap**

17: T4B06

Which of the following controls could be used if the voice pitch of a single-sideband signal seems too high or low?

- A. The AGC or limiter
- B. The bandwidth selection
- C. The tone squelch
- ☒ **D. The receiver RIT or clarifier**

Subelement T5

18: T5A09

What is the name for a current that reverses direction on a regular basis?

- ☒ **A. Alternating current**
- B. Direct current
- C. Circular current
- D. Vertical current

19: T5B12

Which of the following frequencies is equal to 28,400 kHz?

- ☒ **A. 28.400 MHz**
- B. 2.800 MHz
- C. 284.00 MHz
- D. 28.400 kHz

20: T5C13

What are the units of impedance?

- A. Volts
- B. Amperes
- C. Coulombs

✓ **D. Ohms**

21: T5D12

What is the voltage across a 10-ohm resistor if a current of 2 amperes flows through it?

- A. 8 volts
- B. 0.2 volts
- C. 12 volts

✓ **D. 20 volts**

Subelement T6

22: T6A10

Which of the following battery types is rechargeable?

- A. Nickel-metal hydride
- B. Lithium-ion
- C. Lead-acid gel-cell

✓ **D. All of these choices are correct**

23: T6B03

Which of these components can be used as an electronic switch or amplifier?

- A. Oscillator
- B. Potentiometer

✓ **C. Transistor**

- D. Voltmeter

24: T6C12

What do the symbols on an electrical circuit schematic diagram represent?

✓ **A. Electrical components**

- B. Logic states
- C. Digital codes
- D. Traffic nodes

25: T6D03

What type of switch is represented by component 3 in figure T2?

✓ **A. Single-pole single-throw**

- B. Single-pole double-throw
- C. Double-pole single-throw
- D. Double-pole double-throw

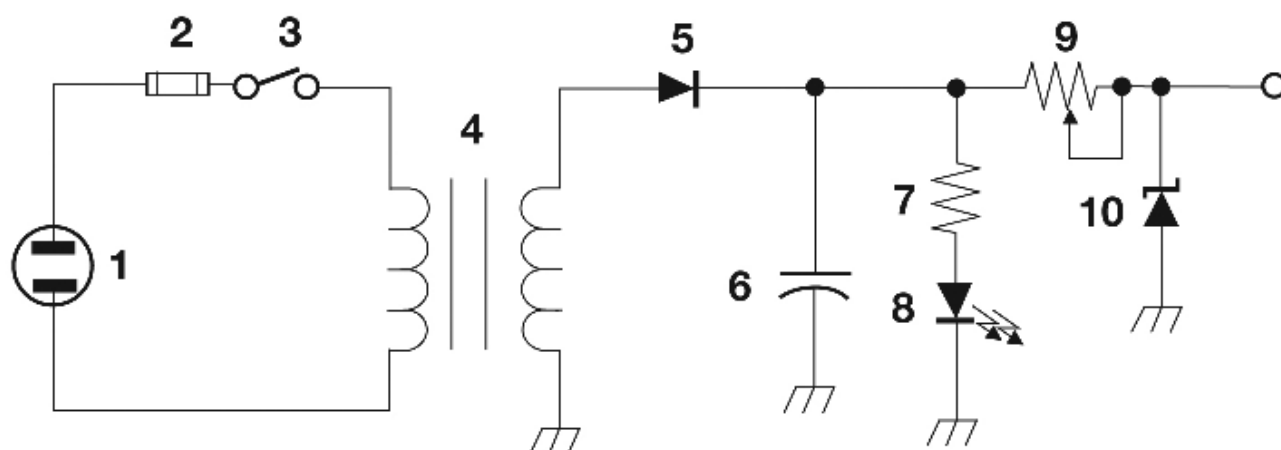


Figure T-2

Subelement T7

Which of the following is used to convert a radio signal from one frequency to another?

- ### A. Phase splitter

✓ **B. Mixer**

- C. Inverter
D. Amplifier

What might be the problem if you receive a report that your audio signal through the repeater is distorted or unintelligible?

- A. Your transmitter may be slightly off frequency
- B. Your batteries may be running low
- C. You could be in a bad location

✓ D. All of these choices are correct

What is the approximate SWR value above which the protection circuits in most solid-state transmitters begin to reduce transmitter power?

✓ **A. 2 to 1**

- B. 1 to 2
C. 6 to 1
D. 10 to 1

Which instrument would you use to measure electric potential or electromotive force?

- A. An ammeter

- ☒ **B. A voltmeter**
- C. A wavemeter
- D. An ohmmeter

Subelement T8

30: T8A10

What is the typical bandwidth of analog fast-scan TV transmissions on the 70 cm band?

- A. More than 10 MHz
- ☒ **B. About 6 MHz**
- ☒ **C. About 3 MHz**
- D. About 1 MHz

31: T8B04

Which amateur stations may make contact with an amateur station on the International Space Station using 2 meter and 70 cm band amateur radio frequencies?

- A. Only members of amateur radio clubs at NASA facilities
- ☒ **B. Any amateur holding a Technician or higher class license**
- C. Only the astronaut's family members who are hams
- D. You cannot talk to the ISS on amateur radio frequencies

32: T8C07

What is the maximum power allowed when transmitting telecommand signals to radio controlled models?

- A. 500 milliwatts
- ☒ **B. 1 watt**
- C. 25 watts
- D. 1500 watts

33: T8D10

Which of the following can be used to transmit CW in the amateur bands?

- A. Straight Key
- B. Electronic Keyer
- C. Computer Keyboard
- ☒ **D. All of these choices are correct**

Subelement T9

34: T9A05

How would you change a dipole antenna to make it resonant on a higher frequency?

- A. Lengthen it
- B. Insert coils in series with radiating wires

✓ **C. Shorten it**

D. Add capacitive loading to the ends of the radiating wires

35: T9B08

Why should coax connectors exposed to the weather be sealed against water intrusion?

✓ **A. To prevent an increase in feed line loss**

B. To prevent interference to telephones

✗ **C. To keep the jacket from becoming loose**

D. All of these choices are correct

Results:

You scored 31 correct answers and 4 incorrect answers from a total of 35.

You would have passed the exam! Congratulations!

e1

Click here to [take another test](#).

Please mail any comments to me, [Simon AA9PW](#), I appreciate your feedback. If you Like the site, please Like us on Facebook!



aa9pw

1,881 likes

Like Page

Share

Be the first of your friends to like this

